



ZERO TAX INCREASE REFERENDUM
SWALLOW SCHOOL DISTRICT
CONTINUING TO INSPIRE EXCELLENCE

SINCE AUGUST, the School Board has been hosting informational sessions and tours for residents about the District's long-range master facilities plan. The School Board is now asking you to vote on the resulting \$8.3M referendum question on November 6. Please contact Superintendent Melissa Thompson with any questions at 262-367-2000 x108.

BALLOT LANGUAGE & EXPLANATION

WHAT YOU WILL SEE ON THE BALLOT

Shall the Swallow School District, Waukesha County, Wisconsin be authorized to issue pursuant to Chapter 67 of the Wisconsin Statutes, general obligation bonds in an amount not to exceed \$8,300,000 for the public purpose of paying the cost of constructing and equipping replacement classrooms and instructional space; renovating the building, including classrooms, labs, restrooms and common areas; and making capital maintenance improvements?

YES

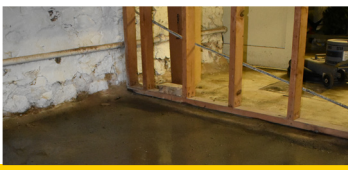
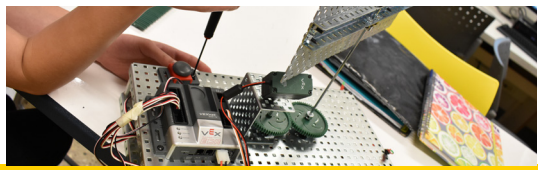
By voting YES,
if the referendum passes,
the District will borrow \$8.3M
to renovate Swallow School,
which **will not increase taxes.**

*This will keep the approximate
\$72 per \$100,000 of property
value for the debt portion
of the tax levy.*

NO

By voting NO,
if the referendum does not pass,
the District will not borrow
\$8.3M and the renovations
won't be done as planned.

*The current debt will be retired
and the tax levy will be reduced
by approximately \$72 per \$100,000
of property value.*



DID YOU KNOW?

3

The 1890's building is the *third* Swallow School, after the first two perished by fire between 1844-1893. It has been modified significantly over time.



The current bell in the 1890's building is *not* the original. The original was stolen in the 1960's.



This referendum ensures the entire building is up to current safety and security standards and is fully ADA accessible.



All students will have access to learning spaces designed to support today's programming with renovations as a result of the referendum.



Preservation of reusable materials for the referendum project will occur, including the bell. The architecture of the replacement building, as well as renovated areas of the school, will honor iconic portions of the 1890's building.



This referendum will not raise your taxes. The debt portion of the tax levy will remain the same, due to the early retirement of existing debt.



Early voting has started. Go to <http://bit.ly/swallowvote> for information on your municipality.

NON-PROFIT
ORGANIZATION
U.S. POSTAGE PAID
PEWAUKEE, WI
PERMIT #3000

*****ECRWSEDDM****

Local
Postal Customer



ZERO TAX INCREASE REFERENDUM
SWALLOW SCHOOL DISTRICT
CONTINUING TO INSPIRE EXCELLENCE

www.swallowschool.org
Dr. Melissa Thompson (262) 367-2000 x108
referendum@swallowschool.org